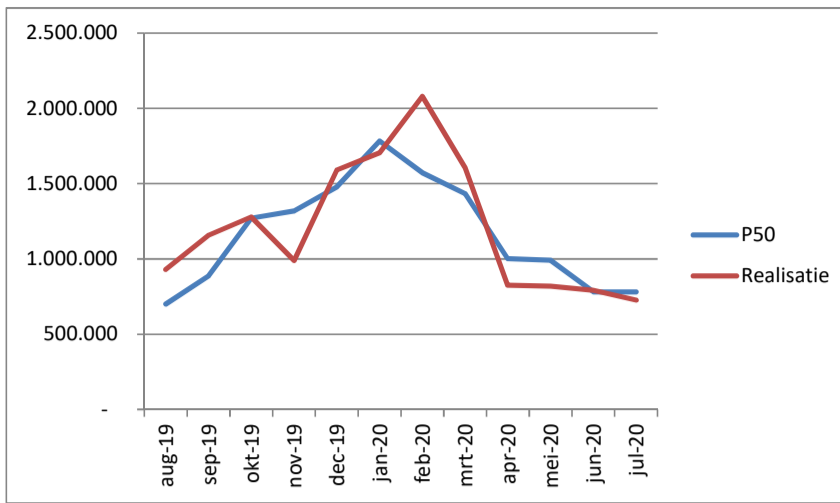
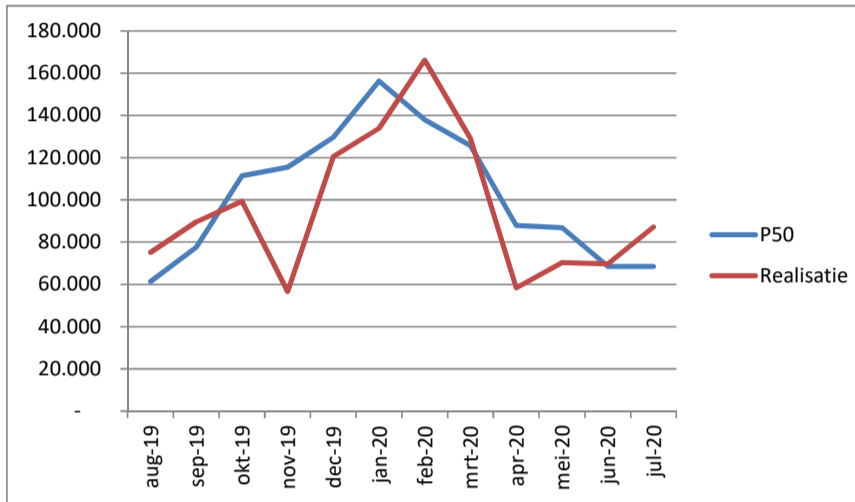


Kennemerwind: maandelijkse opbrengsten in kWh tot en met juli 2020

| Burgervlotbrug | | | |
|----------------|--------|------------|------------|
| % windex | maand | kWh | |
| | | P50 | realisatie |
| 0,0500 | aug-19 | 700.000 | 928.638 |
| 0,0633 | sep-19 | 886.200 | 1.156.756 |
| 0,0908 | okt-19 | 1.271.200 | 1.278.426 |
| 0,0941 | nov-19 | 1.317.400 | 988.904 |
| 0,1057 | dec-19 | 1.479.800 | 1.590.426 |
| 0,1274 | jan-20 | 1.783.600 | 1.704.984 |
| 0,1124 | feb-20 | 1.573.600 | 2.080.264 |
| 0,1024 | mrt-20 | 1.433.600 | 1.608.050 |
| 0,0716 | apr-20 | 1.002.400 | 825.103 |
| 0,0708 | mei-20 | 991.200 | 819.115 |
| 0,0558 | jun-20 | 781.200 | 791.992 |
| 0,0558 | jul-20 | 781.200 | 725.928 |
| | jaar | 14.001.400 | 13.772.658 |



| Monnik en Windpark Zijpe | | | |
|--------------------------|--------|-----------|------------|
| % windex | maand | kWh | |
| | | P50 | realisatie |
| 0,0500 | aug-19 | 61.350 | 75.128 |
| 0,0633 | sep-19 | 77.669 | 89.575 |
| 0,0908 | okt-19 | 111.412 | 99.411 |
| 0,0941 | nov-19 | 115.461 | 56.615 |
| 0,1057 | dec-19 | 129.694 | 120.577 |
| 0,1274 | jan-20 | 156.320 | 133.938 |
| 0,1124 | feb-20 | 137.915 | 166.198 |
| 0,1024 | mrt-20 | 125.645 | 129.056 |
| 0,0716 | apr-20 | 87.853 | 58.364 |
| 0,0708 | mei-20 | 86.872 | 70.439 |
| 0,0558 | jun-20 | 68.467 | 69.772 |
| 0,0558 | jul-20 | 68.467 | 87.131 |
| | jaar | 1.227.123 | 1.156.204 |



| Zonne-project Waarland | | | |
|------------------------|--------|---------|------------|
| % zondex | maand | kWh | |
| | | P50 | realisatie |
| 0,1100 | aug-19 | 17.600 | 19.369 |
| 0,1000 | sep-19 | 16.000 | 13.453 |
| 0,0700 | okt-19 | 11.200 | 7.135 |
| 0,0300 | nov-19 | 4.800 | 3.845 |
| 0,0200 | dec-19 | 3.200 | 2.864 |
| 0,0300 | jan-20 | 4.800 | 2.482 |
| 0,0500 | feb-20 | 8.000 | 4.971 |
| 0,0800 | mrt-20 | 12.800 | 14.945 |
| 0,1200 | apr-20 | 19.200 | 22.182 |
| 0,1300 | mei-20 | 20.800 | 26.011 |
| 0,1300 | jun-20 | 20.800 | 21.082 |
| 0,1300 | jul-20 | 20.800 | 21.658 |
| | jaar | 160.000 | 159.997 |



| Totaal Kennemerwind | | | |
|---------------------|--------|------------|------------|
| % windex | maand | kWh | |
| | | P50 | realisatie |
| | aug-19 | 778.950 | 1.023.135 |
| | sep-19 | 979.869 | 1.259.784 |
| | okt-19 | 1.393.812 | 1.384.972 |
| | nov-19 | 1.437.661 | 1.049.364 |
| | dec-19 | 1.612.694 | 1.713.867 |
| | jan-20 | 1.944.720 | 1.841.404 |
| | feb-20 | 1.719.515 | 2.251.433 |
| | mrt-20 | 1.572.045 | 1.752.051 |
| | apr-20 | 1.109.453 | 905.649 |
| | mei-20 | 1.098.872 | 915.565 |
| | jun-20 | 870.467 | 882.846 |
| | jul-20 | 870.467 | 834.717 |
| | jaar | 15.388.523 | 15.088.859 |

