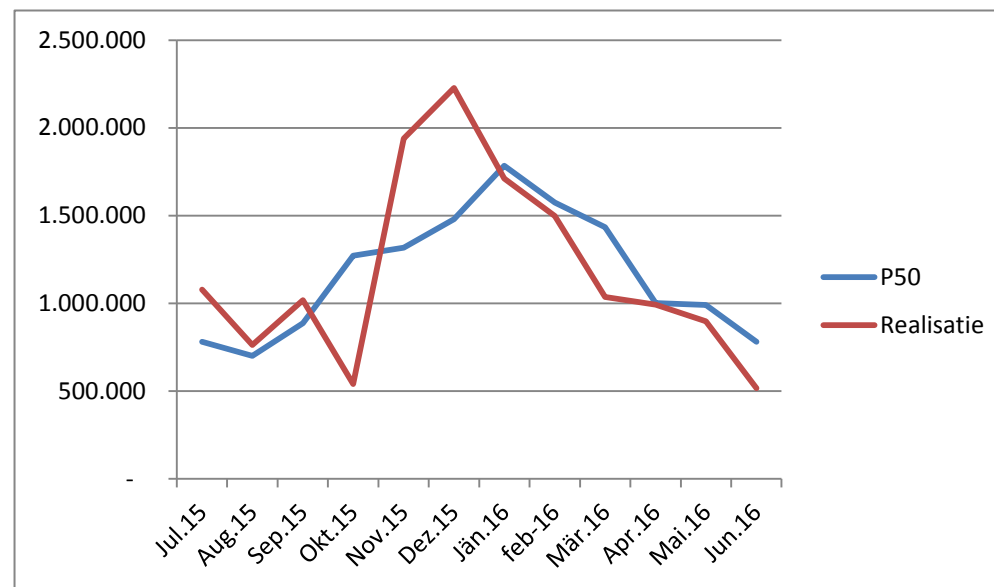
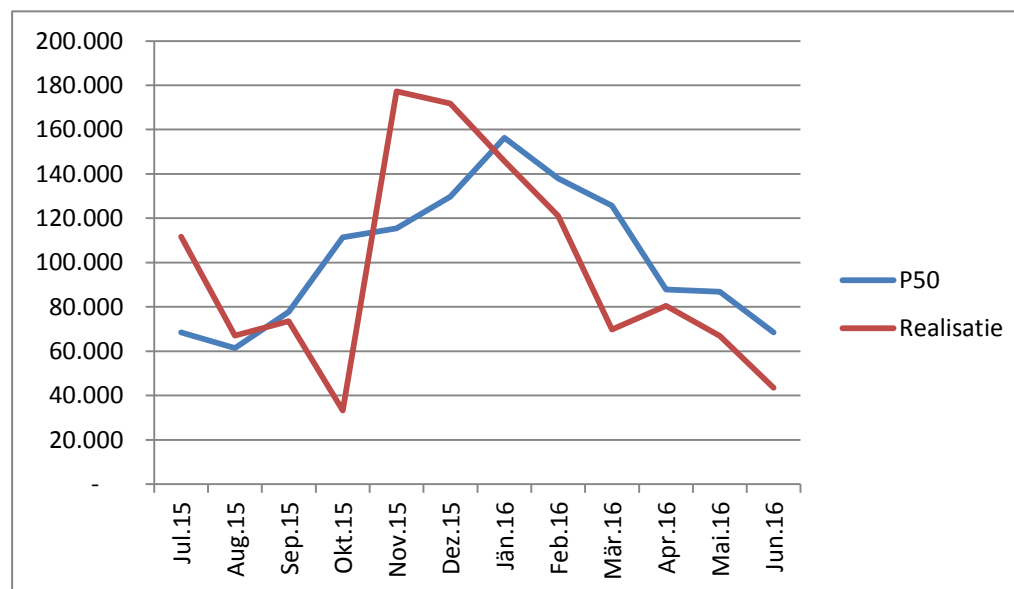


Kennemerwind: maandelijkse opbrengsten in kWh juli 2015 tot en met juni 2016

| Burgervlotbrug | | | |
|----------------|--------|------------|------------|
| % | maand | kWh | |
| windex | | P50 | realisatie |
| 0,0558 | Jul.15 | 781.200 | 1.078.000 |
| 0,0500 | Aug.15 | 700.000 | 762.000 |
| 0,0633 | Sep.15 | 886.200 | 1.018.000 |
| 0,0908 | Okt.15 | 1.271.200 | 541.000 |
| 0,0941 | Nov.15 | 1.317.400 | 1.940.000 |
| 0,1057 | Dez.15 | 1.479.800 | 2.227.000 |
| 0,1274 | Jän.16 | 1.783.600 | 1.711.000 |
| 0,1124 | feb-16 | 1.573.600 | 1.497.000 |
| 0,1024 | Mär.16 | 1.433.600 | 1.037.000 |
| 0,0716 | Apr.16 | 1.002.400 | 992.000 |
| 0,0708 | Mai.16 | 991.200 | 897.000 |
| 0,0558 | Jun.16 | 781.200 | 517.000 |
| | jaar | 12.229.000 | 12.803.000 |



| Monnik en Windpark Zijpe | | | |
|--------------------------|--------|-----------|------------|
| % | maand | kWh | |
| windex | | P50 | realisatie |
| 0,0558 | Jul.15 | 68.467 | 111.700 |
| 0,0500 | Aug.15 | 61.350 | 67.100 |
| 0,0633 | Sep.15 | 77.669 | 73.500 |
| 0,0908 | Okt.15 | 111.412 | 33.200 |
| 0,0941 | Nov.15 | 115.461 | 177.300 |
| 0,1057 | Dez.15 | 129.694 | 171.700 |
| 0,1274 | Jän.16 | 156.320 | 145.800 |
| 0,1124 | Feb.16 | 137.915 | 121.000 |
| 0,1024 | Mär.16 | 125.645 | 69.800 |
| 0,0716 | Apr.16 | 87.853 | 80.500 |
| 0,0708 | Mai.16 | 86.872 | 66.900 |
| 0,0558 | Jun.16 | 68.467 | 43.500 |
| | jaar | 1.071.785 | 1.118.500 |



| Totaal Kennemerwind | | | |
|---------------------|--------|------------|------------|
| % windex | maand | kWh | |
| | | P50 | realisatie |
| 0,0558 | Jul.15 | 849.667 | 1.189.700 |
| 0,0500 | Aug.15 | 761.350 | 829.100 |
| 0,0633 | Sep.15 | 963.869 | 1.091.500 |
| 0,0908 | Okt.15 | 1.382.612 | 574.200 |
| 0,0941 | Nov.15 | 1.432.861 | 2.117.300 |
| 0,1057 | Dez.15 | 1.609.494 | 2.398.700 |
| 0,1274 | Jän.16 | 1.939.920 | 1.856.800 |
| 0,1124 | Feb.16 | 1.711.515 | 1.618.000 |
| 0,1024 | Mär.16 | 1.559.245 | 1.106.800 |
| 0,0716 | Apr.16 | 1.090.253 | 1.072.500 |
| 0,0708 | Mai.16 | 1.078.072 | 963.900 |
| 0,0558 | Jun.16 | 849.667 | 560.500 |
| | jaar | 13.300.785 | 13.921.500 |

